



40 Smith Square, Westminster  
London SW1P

GARTON JONES.COM



GARTON JONES  
LONDON



# 40 Smith Square, Westminster London, SW1P

GARTON JONES.COM

49 Marsham Street Sales +44 (0) 20 7340 0480  
London westminster@gartonjones.com  
SW1P 3DP www.gartonjones.com

## £1,000 Per Week

We are delighted to offer this superb two bedroom apartment available to let in the highly prestigious Smith Square which offers discreet accommodation in one of the finest locations in the centre of Westminster. The internal square footage measures at 1057 square feet (98.2 Sq.M) and comprises of a dual aspect reception room with fabulous views of St. John's Church, a separate eat in kitchen, there are two double bedrooms both with ample fitted wardrobes and two shower rooms with an en-suite to the master bedroom. Smith Square is located within the division bell for the Houses of Parliament and extremely convenient access to many of the renowned local landmarks like Westminster Abbey, Tate Britain Gallery and the River Thames. The local transport links of Victoria Station are nearby providing mainline UK services including the Gatwick Express as well as the underground services of Victoria, Pimlico, St James Park and Westminster. The area has an abundance of amenities such as Sainsbury's, Waitrose, Marks & Spencer's and a Curzon Cinema plus following on from the extensive regeneration of Victoria street a selection of many new restaurants to compliment existing ones such as The Vincent Rooms, The Cinnamon Club and many more. Distinguished hotels like The Wellington, The Goring and St Ermins' are within very close proximity.

\*\*Please note that the furniture will differ in bedroom 2 as the bed was replaced

Minimum Term 12 Months  
Deposit 6 Weeks  
Westminster Council Tax Band E (London Borough of Westminster)  
EPC Rating C (71)

- Fantastic 2 Bedroom Apartment
- 1057 Square Feet (98.2 Sq.M)
- 2nd Floor
- Reception Room
- Separate Eat In Kitchen
- Shower Rooms (En-Suite To Master)
- Fabulous views of St. John's Church
- Available: 14th January 2026
- Walking Distance to Westminster & St James' Park Station
- Moments From Selection of Amenities



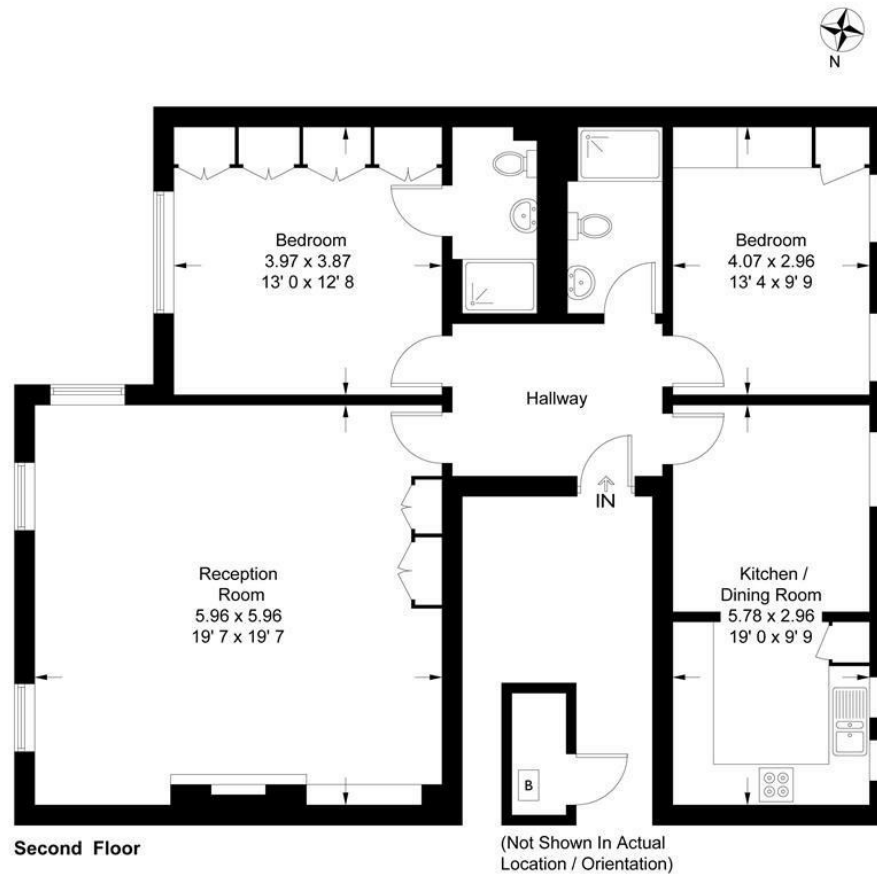
EPC certificate available on request.

**Smith Square**

Approximate Gross Internal Area = 1057 sq ft / 98.2 sq m

Boiler Room = 15 sq ft / 1.4 sq m

Total = 1072 sq ft / 99.6 sq m

GARTON JONES  
LONDON

This plan is not to scale and must be used as layout guidance only. All measurements and areas are approximate and should not be relied upon to provide accurate information. This plan must not be relied upon when making property valuations, design considerations or any other such relevant decisions. We accept no responsibility or liability (whether in contract, tort or otherwise) in relation to any loss whatsoever arising from or in connection with any use of this plan or the adequacy, accuracy or completeness of it or any information within it.





